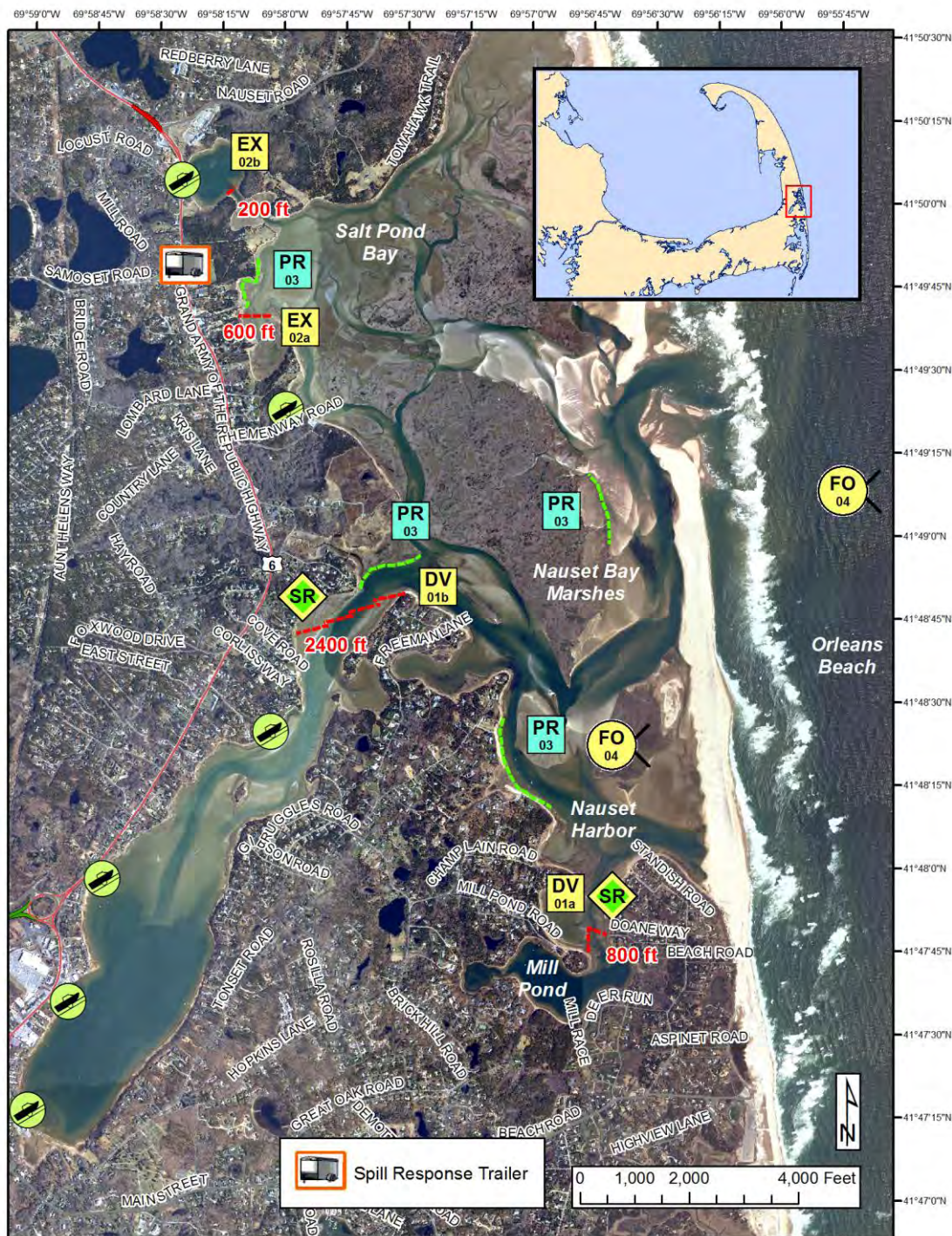




# Cape and Islands Geographic Response Plan

## Nauset CI-09



<b>BB</b> Beach Berm	<b>DF</b> Deflection Booming	<b>MD</b> Mosquito Ditch	<b>Map Legend</b>
<b>CB</b> Culvert Block	<b>EX</b> Exclusion Booming	U.S. Coast Guard Station	
<b>DV</b> Diversion Booming	<b>SR</b> Shoreside Recovery	Boat Ramp	
<b>PR</b> Passive Recovery	<b>FO</b> Free-oil Recovery	Snare or Sorbent Boom	
		Protected-water Boom (Flood Tide)	
		Protected-water Boom (Ebb Tide)	
		Beach Berm Material	





A total of 4 State Response Trailers are required to implement all of the tactics in this GRP. Responders should always consider on-scene conditions before deploying GRP tactics. Tactics may not be safe or effective under certain conditions. Responder safety should always be the first priority.





## Cape and Islands Geographic Response Plan

### Nauset CI-09

ID	Location and Description	Response Strategy	Implementation
<b>CI-09-01</b> 	<b>Nauset Harbor</b> Mill Pond a. Lat. 41°47'47.1"N Lon. 69°56'48.6"W Town Cove b. Lat. 41°48'33.6"N Lon. 69°57'55.9"W	<b>Divert and Collect-Shoreside</b> Use 16 to 18" boom in the identified pattern and places to divert oil to shoreside collection locations.	Deploy anchors and boom with skiffs. For (a) place 800 ft. of boom in chevron pattern at the proper angle to divert incoming oil to the collection site. For (b) cascade the boom in 4 x 600 ft. sections to divert oil to collection site on the identified beach. Set up shoreside recovery at both sites and tend throughout the tide.
<b>CI-09-02</b> 	<b>Nauset Harbor</b> Christian Creek a. Lat. 41°49'42.2"N Lon. 69°58'7.6"W Salt Pond b. Lat. 41°50'1.4"N Lon. 69°58'9.4"W	<b>Exclusion</b> Exclude oil from entering or leaving Christian Creek and Salt Pond.	Deploy anchors and boom with skiffs at high tide. For both (a & b) place 16 to 18" water boom directly across the creeks. Secure with anchor stakes on shore and anchors in midstream. Tend throughout the tide. Boom Lengths: a. 600 ft. b. 200 ft.
<b>CI-09-03</b> 	<b>Nauset Harbor</b> <b>Various Locations</b> Lat. 41°49'9.1"N Lon. 69°56'45.6"W Lat. 41°48'17.8"N Lon. 69°57'9.2"W Lat. 41°48'58.5"N Lon. 69°57'43.0"W Lat. 41°49'48.0"N Lon. 69°58'10.9"W	<b>Passive Recovery</b> Place passive recovery tactics to recover oil and prevent it from entering sensitive areas. Deploy at locations that are likely to be impacted and the booms can be adequately secured.	Approach the streams and intertidal areas on rising tide. Place and anchor snare or sorbent boom across the mouths of the streams and intertidal areas that are likely to be impacted by oil. Replace as necessary to maximize the recovery.
<b>CI-09-04</b> 	<b>Nauset Harbor</b> Nearshore waters in the general area of: Lat. 41°49'42.9"N Lon. 69°55'28.8"W	<b>Free-oil Recovery</b> Maximize free-oil recovery in the offshore & nearshore environment of Nauset Harbor depending on spill location and trajectory.	Deploy free-oil recovery strike teams upwind and up current of the Nauset Harbor. Use aerial surveillance to locate incoming slicks. Ensure that responders have experience with on-water free-oil recovery.











## Cape and Islands Geographic Response Plan

### Nauset CI-09

ID	Response Resources	Staging Area Site Access	Resources Protected	Special Considerations
<b>CI-09-01</b>  	<b>Deployment</b> <i>Equipment</i> 3200 ft. 16 to 18" boom 17 anchor systems 4 anchor stakes 2 shoreside recovery systems <i>Vessels</i> 2 skiffs <i>Personnel/Shift</i> 6 total (1 vessel operator + 1 responders per vessel, 2 shoreside responder) <b>Tending</b> <i>Vessels</i> 1 skiff <i>Personnel/Shift</i> 4 total (1 vessel operator + 1 responders per vessel, 2 shoreside responders)	Easy access from Route 6 to the small boat launch at Hemmenway Landing. Road access is available the parts of shoreline.  Vehicle access along the Nauset barrier beach may be available through coordination with CCNS (north and south) and the Town of Orleans (south).  Boat ramps may not be useable at low tide.  Via marine waters for deploying and tending boom.  Chart 13246-1	Fish-shellfish, finfish  Birds-waterfowl concentration  Marine mammals-seals  Habitat- marsh, sheltered tidal flats, barrier beach  Human Use- Commercial boat harbor, aquaculture, high-use recreational area  Threatened/Endangered species- Piping Plovers (April 1 – August 31) Roseate Terns (foraging mid-July thru Sept 30)  Land mgt: CCNS	Vessel master should have local knowledge.  Entire site surveyed: 10/11/07.  Federal and State listed threatened wildlife may be present, particularly from March through August, limiting site access. Coordinate with CCNS, USFWS, and the Mass. Natural Heritage and Endangered Species Program.  Use caution in sandy dunes during months when plovers are present. Nesting areas may include beaches, sand spits, foredunes, and washover areas in dunes. Consult with USFWS as early as possible regarding shoreline collection areas and access plans.  Use caution operating in nearshore areas when Roseate Terns are foraging. Consult with USFWS as early as possible.  Tested: not yet
<b>CI-09-02</b>  	<b>Deployment</b> <i>Equipment</i> 800 ft. 16 to 18" boom 3 small anchor systems 4 anchor stakes <i>Vessels/Personnel/Shift</i> Same as CI-09-01 <b>Tending</b> <i>Vessels/Personnel/Shift</i> Same as CI-09-01	Same as CI-09-01	Same as CI-09-01	Vessel master should have local knowledge.  Tested: not yet
<b>CI-09-03</b>  	<b>Deployment</b> <i>Equipment</i> 2000 ft. snare or sorbent boom 40 anchor stakes <i>Vessels/Personnel/Shift</i> Same as CI-09-01 <b>Tending</b> <i>Vessels/Personnel/Shift</i> Same as CI-09-01	Same as CI-09-01	Same as CI-09-01	Use snare boom for persistent oils and sorbent boom for non-persistent oils.
<b>CI-09-04</b>  	Deploy multiple free-oil recovery strike teams as required to maximize interception of oil before it impacts sensitive areas.	Same as CI-09-01	Same as CI-09-01	Vessel master should have local knowledge.  Use extreme caution, shoal waters with rocks & continually shifting sand bars. Currents and winds are locally variable and can create dangerous operating environments.





### Site Photographs and Contact Information



Town Cove entrance looking east.



Nauset Harbor entrance looking northwest.



Mill Pond looking west.



Nauset Harbor looking west.

#### **Contact Information:**

Eastham-Harbormaster:  
508) 240-5972

Eastham-Fire: (508) 255-2324

Eastham-Natural Resources:  
(508) 240-5972

Orleans-Fire: (508) 255-0050

Orleans-Shellfish & Harbormaster: (508) 240 3755

NPS/Cape Cod Nat'l Seashore:  
(617) 242-5659 (24/7)

USFWS: (413) 539-3194

Mutual Aid is available from other communities within the Buzzard's Bay GRP region that have state response trailers. More information can be found on the following MassDEP web site: <http://www.mass.gov/eea/agencies/massdep/cleanup/marine/#5>

Additional information regarding State Response Trailers, including locations and inventories can be found here: <http://www.mass.gov/eea/agencies/massdep/cleanup/marine/oil-spill-training-and-equipment-resources.html>

