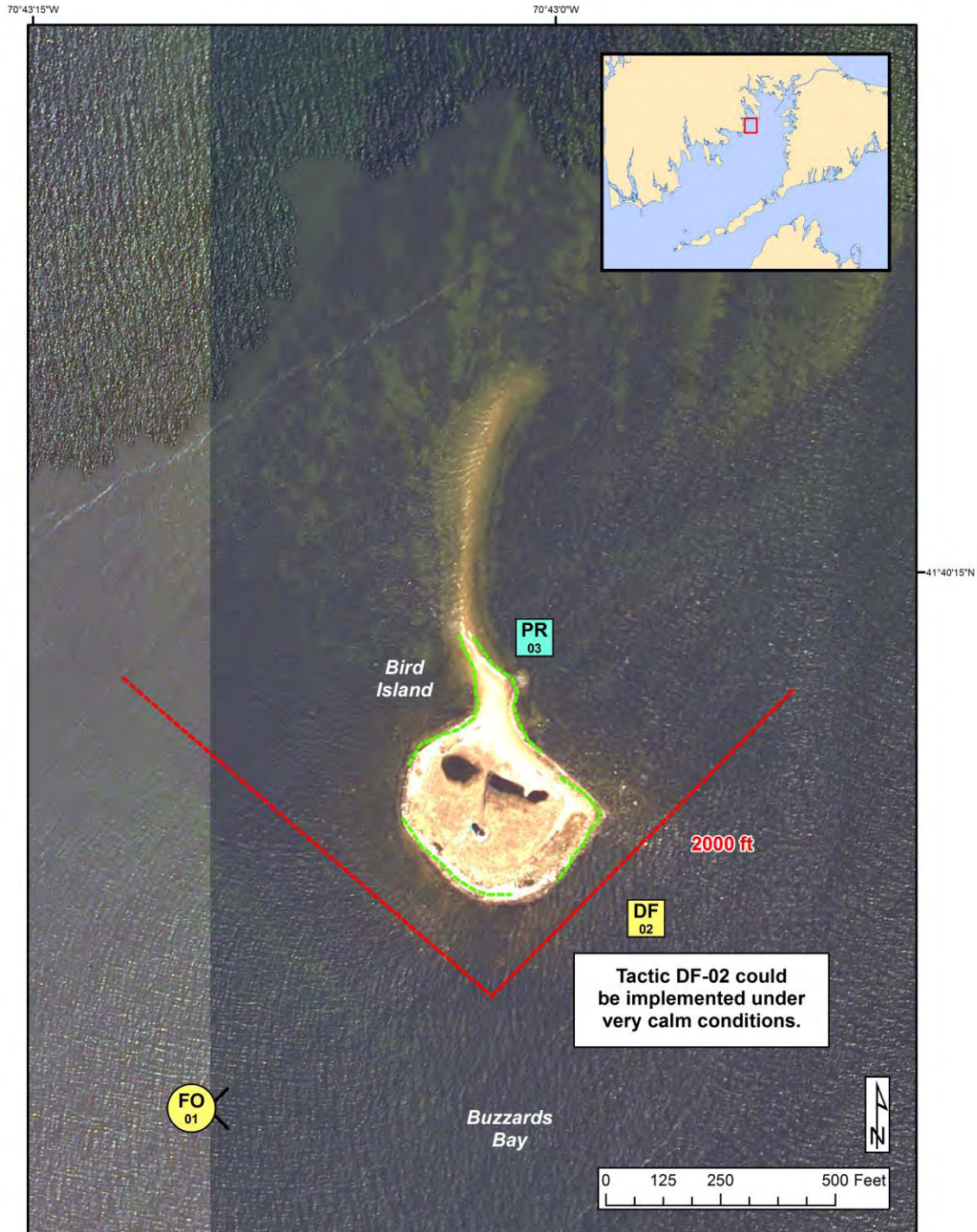




Buzzards Bay Geographic Response Plan

Bird Island BB-20

THE COALITION FOR
BUZZARDS BAY



BB Beach Berm	DF Deflection Booming	MD Mosquito Ditch	Map Legend
CB Culvert Block	EX Exclusion Booming	U.S. Coast Guard Station	
DV Diversion Booming	SR Shoreside Recovery	Boat Ramp	
PR Passive Recovery	FO Free-oil Recovery	Snare or Sorbent Boom	
		Beach Berm Material	
		Protected-water Boom (Flood Tide)	
		Protected-water Boom (Ebb Tide)	




A total of 2 State Response Trailers are required to implement all of the tactics in this GRP. Responders should always consider on-scene conditions before deploying GRP tactics. Tactics may not be safe or effective under certain conditions. Responder safety should always be the first priority.





Buzzards Bay Geographic Response Plan

Bird Island BB-20




ID	Location and Description	Response Strategy	Implementation
BB-20-01 	Bird Island Nearshore waters in the general area of: Lat. 41°39'30"N Lon. 70°43'00"W	Free-oil Recovery Maximize free-oil recovery in the offshore & nearshore environment of Bird Island depending on spill location and trajectory.	Deploy free-oil recovery strike teams upwind and up current of the Harbor. Use aerial surveillance to locate incoming slicks.
BB-20-02 	Bird Island Lat. 41°40'04"N Lon. 70°40'02"W	Deflection Set two lines of protected water boom in a chevron shape to deflect oil away from island.	Deploy anchors and boom with skiffs. Set 2000 ft of boom in a chevron shape, angled to deflect incoming oil away from the island. Anchors should be placed at 200 foot intervals.
BB-20-03 	Bird Island Lat. 41°40'10"N Lon. 70°43'02"W	Passive Recovery Place passive recovery along island shoreline to prevent oil from entering sensitive areas.	Place snare or absorbent boom along marsh front to minimize damage and facilitate recovery. Deploy after consulting with MASSWildlife. Replace as necessary to maximize the recovery.





Buzzards Bay Geographic Response Plan

Bird Island BB-20

ID	Response Resources	Staging Area Site Access	Resources Protected	Special Considerations
BB-20-01 	Deploy multiple free-oil recovery strike teams as required to maximize interception of oil before it impacts sensitive areas.	Vessel Platform Via marine waters. Chart 13230-1	Fish-shellfish, finfish Birds-waterfowl concentration; Roseate Tern (state/federally endangered) Habitat-extensive tidal flat and eel grass beds, sand and cobble beaches	Vessel master should have local knowledge.
BB-20-02 	Deployment <i>Equipment</i> 2000 ft. 18" boom 11 anchor sets <i>Vessels</i> 2 skiffs <i>Personnel/Shift</i> 6 total (1 vessel operator + 1 responder per vessel, 2 shoreside responders) Tending <i>Vessels</i> 2 skiffs <i>Personnel/Shift</i> 6 total (1 vessel operator + 1 responder per vessel, 2 shoreside responders)	Staging Area: Marion Town Landing, Front St. Site Access: Via marine waters for deploying and tending boom. Chart 13230-1	Same as BB-20-01	Vessel master should have local knowledge. Managed breeding site for Roseate Tern. Tested: not yet.
BB-20-03 	To be determined at time of incident.	Same as BB-20-01	Same as BB-20-01	Use snare boom for persistent oils and sorbent boom for non-persistent oils.





Site Photographs and Contact Information



Bird Island at low tide on 8 September 2004. View looking west.

Contact Information:

Mattapoisett Fire Dept.:
(508) 758-4150

Mattapoisett Harbor Master:
(508) 758-4191

Mattapoisett First Responder:
(508) 758-9669

Marion Harbor Master: (508) 748-3535

Marion Fire Department: (508) 748-1177

Massachusetts Dept. of Fish and Wildlife:
(508) 792-7270

Massachusetts Audubon IBA Program: (781) 837-9400

The Coalition for Buzzards Bay: (508) 999-6363

Mutual Aid is available from other communities within the Buzzard's Bay GRP region that have state response trailers. More information can be found on the following MassDEP web site: <http://www.mass.gov/eea/agencies/massdep/cleanup/marine/#5>

Additional information regarding State Response Trailers, including locations and inventories can be found here: <http://www.mass.gov/eea/agencies/massdep/cleanup/marine/oil-spill-training-and-equipment-resources.html>

