

GRP EXERCISE PLAN

Gloucester/Rockport/Manchester-by-the-Sea GRP Exercise

GRP Site: NS-17 (South Annisquam River)

10/03/12 9:00am to 1:00 pm (Rain date 10/04/12)

Planning Meetings

- Initial planning meeting: 3/15/12 at Rockport PD
- Mid-term planning meeting: 8/17/12 via teleconference
- Final planning meeting held 9/20/12 via teleconference

Objectives

- Simulate actual incident – Fire Chiefs organize in Unified Command, take lead in assigning personnel, implementing tactics.
- Develop tactical and operational plans to assign personnel and resources for GRP deployment.
- Utilize WebEOC and at least two other NERAC assets specified during initial planning meeting.
 - Utilize WebEOC to post exercise status updates
 - Utilize NERAC computers & wireless router to access WebEOC
 - Utilize pop up tent to function as Command Post
 - Utilize sign board
- Deploy equipment from Manchester response trailers, utilizing local firefighters and harbor personnel as responders and vessels and support equipment from all participating towns.
- Provide opportunity for responders from Gloucester, Rockport, Manchester-by-the-Sea, USCG, MassDEP, and other agencies to work cooperatively in a Task Force setting.
- Deploy protective booming tactics selected during initial planning meeting.
- Deploy EX-01b (Little River) using Manchester-by-the-Sea equipment.
 - Evaluate Heron Way Marina parking lot/boat ramp as staging area and review site access considerations.
 - Evaluate GRP tactic and identify any changes or modifications necessary to achieve goal of excluding oil from Little River.
 - Evaluate operational challenges associated with deploying boom in on-scene wind and sea state conditions.
- Evaluate interoperable communications effectiveness for the three towns and multiple departments/agencies.
- Document all activities.
- Conduct post-deployment “hot wash” and debrief to identify lessons learned for the After Action Report/Improvement Plan.
- Have participants and observers fill out written evaluations and include pertinent feedback in the AAR/CAP.

- Identify any planning or training gaps brought out by the GRP deployment exercise and incorporate into Corrective Action plans.

Participants

Based on initial planning, participants will include individuals from:

- Gloucester Harbormaster
- Gloucester Fire Dept.(EMA)
- Rockport Harbormaster
- Rockport Fire Dept.
- Rockport EMA (Police)
- Manchester Harbormaster
- Manchester Fire Dept (EMA)
- Mass DEP
- U.S. Coast Guard Sector Boston
- U.S. Coast Guard Station Gloucester
- EPA
- NERAC/MEMA
- Mass Division of Marine Fisheries
- Mass Environmental Police
- Moran Environmental (contractor)
- Nuka Research and Planning Group (facilitator)

Schedule of Events

Time	Event	Location/Details
08:30	Equipment staged at Heron Way Marina	Manchester bringing trailer and boat/trailer; Rockport steaming vessel and personnel traveling to Rockport PD in Manchester vehicles.
09:00	Meet for classroom briefing and trailer equipment review	Rockport PD Community Room/parking lot, general briefing, review tactics and protective booming, review of equipment in Rockport trailer. Assign personnel, and develop an Operational Plan and Comms Plan.
10:30	Initiate field exercise	Heron Way Marina boat ramp, Command Post (tent). Safety briefing, present scenario, review assignments, set up trailer equipment for deployment.
11:00	Deploy EX-01b (800' chevron exclusion). Leave boom in place to evaluate	Load boom to vessels from trailer at boat ramp. Responders will deploy boom as drawn in plan. Other task forces and observers/evaluators will watch from shore.
12:00	Evaluate EX-01b	Responders will deploy boom up-current and up-wind of exclusion boom.
12:15	Demobilize EX-01b	Remove boom and anchors, rinse & store boom in trailer.
12:45	Debrief	Reconvene at Heron Way Marina parking lot for debrief.
13:00	Adjourn	

General Logistics

- Classroom briefing to take place at the Rockport Community Room, Rockport PD.
- Rockport trailer equipment review will take place at Rockport PD parking lot after classroom portion.
- Safety briefing to take place at Heron Way Marina parking lot.
- Manchester-by-the-Sea oil spill trailer staged at Heron Way Marina boat ramp by 08:30 on 10/3/12. Manchester trailer equipment used for deployment.
- All vessels will be moored or trailered at Heron Way Marina boat ramp prior to exercise.
- Parking will be available at the boat ramp.
- Gloucester FD to provide vehicle to rinse boom after exercise.
- Gloucester HM will check with Marina regarding availability of restrooms and timing of floating dock removal.
- Snacks and beverages will be provided to all participants.
- Local harbormasters will communicate with commercial mariners and USCG will issue NTM regarding deployment tests.
- Rockport Harbormaster will notify press; Manchester and Gloucester providing Rockport with a list of media contacts.
- MassDEP will issue press release day of exercise.

Support Equipment

Vessels

Preliminary list of vessels:

- Rockport Harbormaster
- 24' vessel
- Manchester-by-the-Sea Fire
- 13' whaler
- Gloucester Harbormaster
- 23' Parker

Personnel

- Estimate 25-30 responders total among the 3 towns.

Boom

- 1,000 feet Manchester-by-the-Sea Trailer (mixed 12" and 18")

Communications

- Marine VHF (on-water tactical ops): Channel 19
- Command frequency – Rockport Fire (portable handhelds will be distributed.
- Each response vessel should have one radio with Command frequency. UC will also monitor tactical channel.

NERAC Assets

- WebEOC
- Computers and wireless router to access WebEOC
- Pop-up tent

Other Information

Tides (Gloucester Harbor) October 3, rain date October 4

High 1		Low 1		High 2		Low 2	
1:43	8.9 ft	7:39	.8 ft	13:53	9.4 ft	20:08	0.28 ft
2:24	8.6 ft	8:19	1.1 ft	14:33	9.2 ft	20:50	0.58 ft

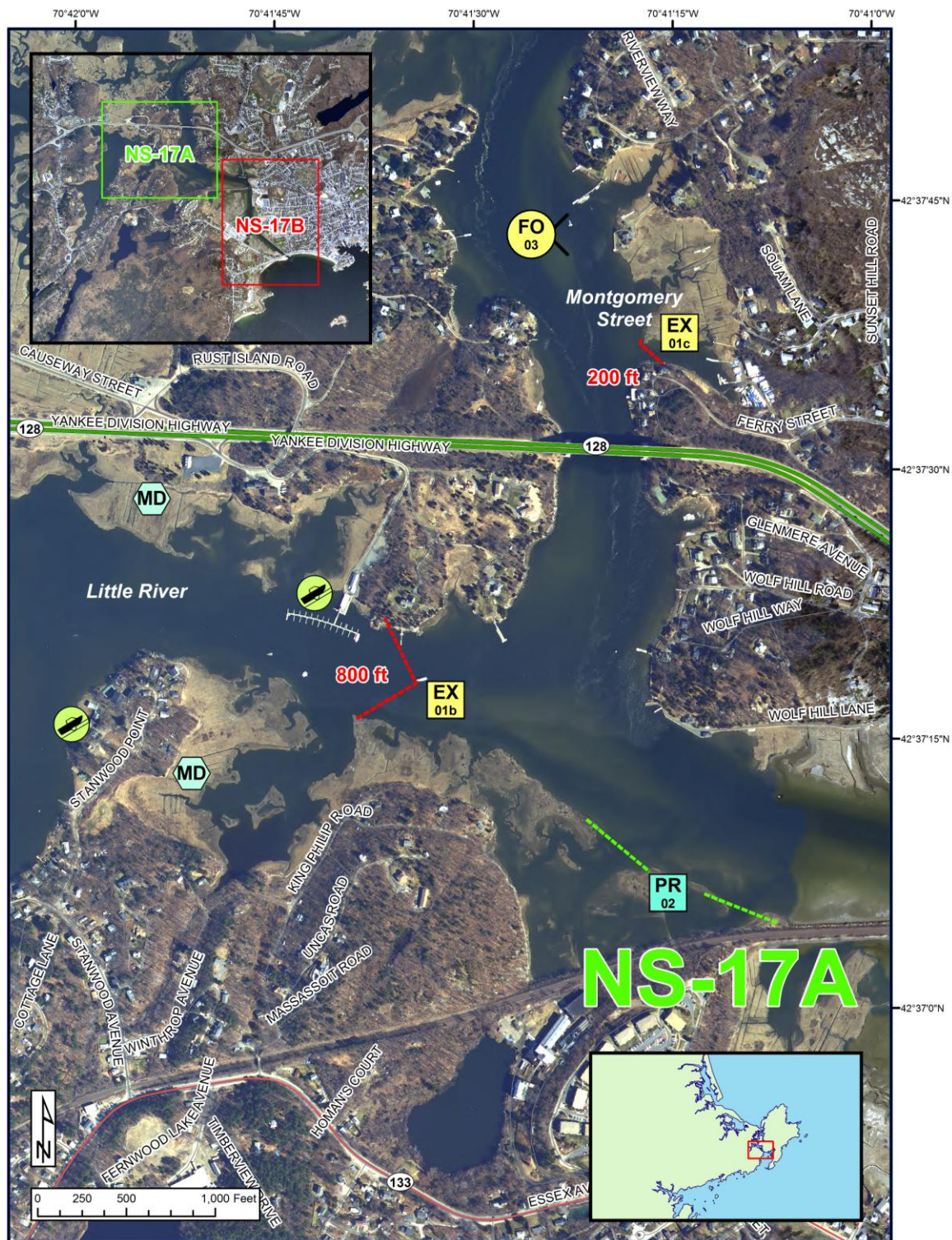
Attachments

- NS-17 GRP



North Shore Geographic Response Plan

South Annisquam River NS-17



BB Beach Berm	DF Deflection Booming	MD Mosquito Ditch	Map Legend
CB Culvert Block	EX Exclusion Booming	U.S. Coast Guard Station	Protected-water Boom (Flood Tide)
DV Diversion Booming	Shoreside Recovery	Boat Ramp	Protected-water Boom (Ebb Tide)
PR Passive Recovery	Free-oil Recovery	Snag or Sorbent Boom	Beach Berm Material





North Shore Geographic Response Plan

South Annisquam River NS-17






BB Beach Berm	DF Deflection Booming	MD Mosquito Ditch	Map Legend
CB Culvert Block	EX Exclusion Booming	U.S. Coast Guard Station	
DV Diversion Booming	SR Shoreside Recovery	Boat Ramp	
PR Passive Recovery	FO Free-oil Recovery	Snare or Sorbent Boom	
		Beach Berm Material	
		Protected-water Boom (Flood Tide)	
		Protected-water Boom (Ebb Tide)	





North Shore Geographic Response Plan

South Annisquam River NS-17




ID	Location and Description	Response Strategy	Implementation
NS-17-01 	South Annisquam River (a) Draw Bridge Lat. 42°36'33"N Lon. 70°40'18"W (b) Little River Lat. 42°37'18"N Lon. 70°41'36"W (c) Cherry Hill Marsh Lat. 42°37'36"N Lon. 70°41'16"W (d) Train Bridge Marsh Lat. 42°37'9"N Lon. 70°40'49"	Exclusion (a) Exclude oil from entering the Annisquam River from the south and impacting the identified marshes. (b - d) As a backup to (a) exclude oil from entering side creeks and marshes along the Annisquam River.	Deploy anchors and boom with skiffs. For (a) place 18" boom in a chevron pattern with the apex extending into the harbor. Set anchors every 200 ft. Structures in the harbor may provide anchoring points for the boom. The shoreside attachment points must be able to rise/fall with the tide to maintain a seal with the stone bulkhead. Use passive recovery at the attachment points to minimize leakage. For (b - d) place 18" boom as indicated in diagram to exclude oil from entering sensitive areas. Set anchors every 200 ft. Place passive recovery at attachment points to minimize leakage. Boom lengths: (a) 1,600 ft, (b) 800 ft, (c) 200 ft, (d) 1,000 ft Tend throughout the tide.
NS-17-02 	Various Locations	Passive Recovery Place passive recovery tactics to recover oil that may impact the marsh.	Place and anchor snare or sorbent boom to line the marsh edges. Replace as necessary to maximize recovery. If oil threatens to enter mosquito ditches, use available materials to close off the ditch channel to prevent oil from migrating further into the area. Line with sorbent or snare boom to absorb any oil that migrates into the mosquito ditch. Replace as necessary to maximize the recovery.
NS-17-03 	Various Locations	Free-Oil Recovery Maximize free-oil recovery in the offshore & nearshore environment depending on spill location and trajectory.	Deploy free-oil recovery strike teams upwind and up current of the port area. Use aerial surveillance to locate incoming slicks. Ensure that responders have experience with on-water free-oil recovery. Stay in main channels during low tide.





North Shore Geographic Response Plan

South Annisquam River NS-17

ID	Response Resources	Staging Area Site Access	Resources Protected	Special Considerations
NS-17-01 	Deployment <i>Equipment (All sites)</i> 3600 ft 18" boom 14 anchor systems 8 anchor stakes 600 ft of snare or sorbent boom Vessels 2 skiffs Personnel/Shift 8 total (1 vessel operator + 1 responder per vessel, 4 shoreside responders) Tending Vessels 1 skiff Personnel/Shift 4 total (1 vessel operator + 1 responder per vessel, 2 shoreside responders)	Staging Area: Gloucester Fire Station, 8 School St; Rt 128, to Washington St, to Pine St, to School St. Site Access: From Washington St to (a) Western Ave, (b) Rt 128 to Exit 12 to Rust Island Rd to Biskie Head Point (c) Ferry St to Ferry Hill Road (d) Riverside Ave. Chart 13281	Fish – Finfish Invertebrates - Shellfish, Urchins Habitat – Marsh, Tidal Flats, Rocky Shoreline Human Use – Beach, Boat Ramp, Marina, Port/Harbor	Tide range 7 – 11 ft. The currents can exceed 7 kts at the drawbridge. Elsewhere max currents range from .5 to 3 kts. Moored vessels may need to be moved. Vessel master should have local knowledge. Entire site surveyed: 06/26/09. Tested: not yet.
NS-17-02 	Deployment <i>Equipment</i> 1200 ft of snare or sorbent boom 12 anchor stakes Vessels 1 skiff Personnel/Shift 4 shoreside responders	Site Access: Same as NS-17-01.	Same as NS-17-01.	Same as NS-17-01.
NS-17-03 	Deploy multiple free-oil recovery strike teams as required to maximize interception of oil before it impacts sensitive areas.	Site Access: Vessel Platform Via marine waters. Chart 13281-1.	Same as NS-17-01.	Vessel master should have local knowledge.





Site Photographs and Contact Information



Annisquam River Drawbridge at low tide 26 June 2009. View looks north.



Marsh and marina north of train bridge at low tide 26 June 2009. View looks east.



Entrance to Little River at low tide on 26 June 2009. View looks west.



Entrance to Little River. MassDEP, 09 April 2009.



Entrance to South Annisquam River. MassDEP 09 April 2009.

Contact Information:

Gloucester Fire Department: 978-281-9760
Gloucester Harbormaster: 978-282-3012
Gloucester Shellfish Constable: 978-281-9781
Mass Bays Estuary Assn: 978-3740519
U.S.C.G. Station Gloucester: 978-283-0705
Mass Division of Marine Fisheries: 617-626-1520
Environmental Police: 800-632-8075

