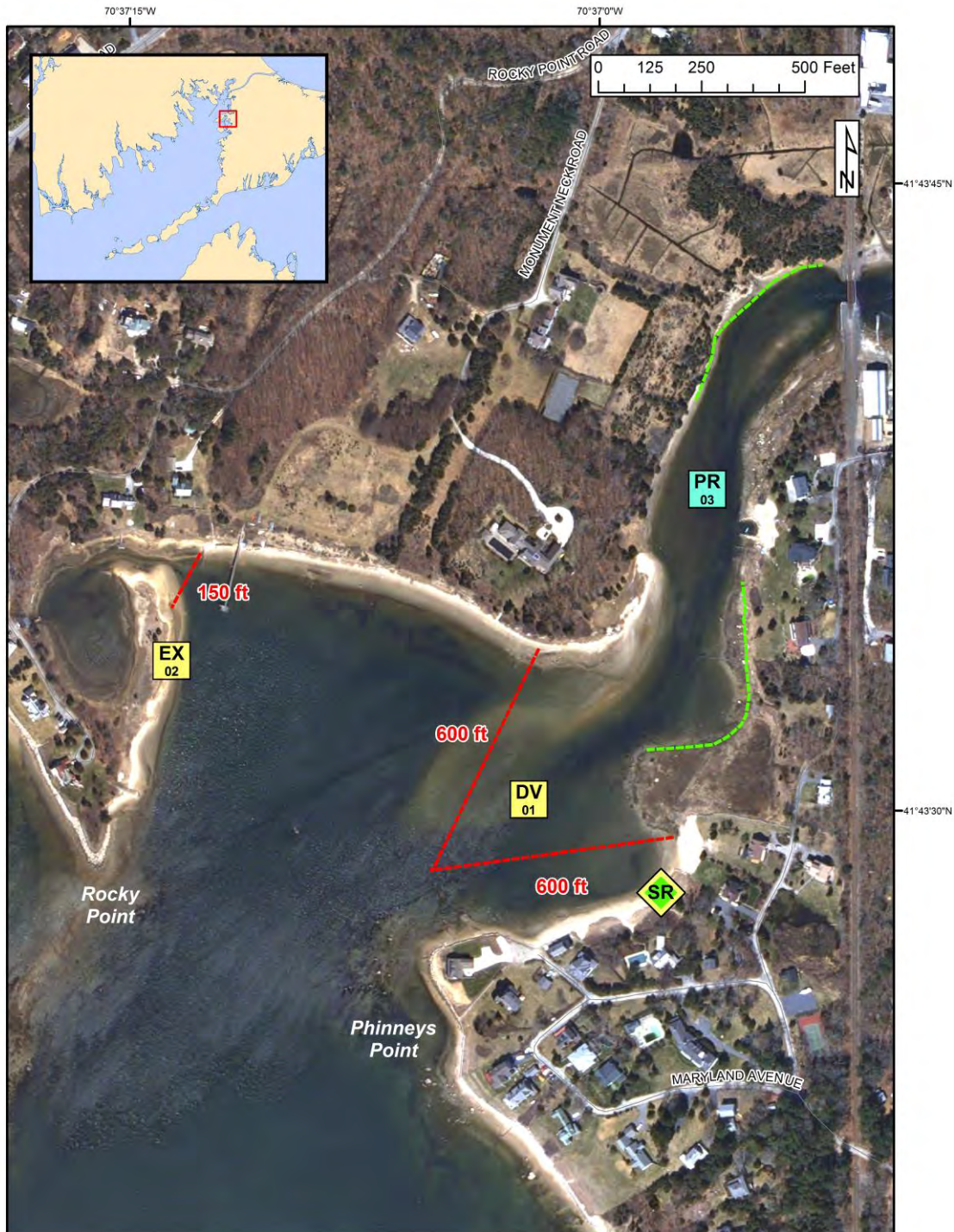




Buzzards Bay Geographic Response Plan

Back River System BB-28

THE COALITION FOR
BUZZARDS BAY



BB Beach Berm	DF Deflection Booming	MD Mosquito Ditch	Map Legend
CB Culvert Block	EX Exclusion Booming	U.S. Coast Guard Station	Protected-water Boom (Flood Tide)
DV Diversion Booming	SR Shoreside Recovery	Boat Ramp	Protected-water Boom (Ebb Tide)
PR Passive Recovery	FO Free-oil Recovery	Snare or Sorbent Boom	Beach Berm Material




A total of 2 State Response Trailers are required to implement all of the tactics in this GRP. Responders should always consider on-scene conditions before deploying GRP tactics. Tactics may not be safe or effective under certain conditions. Responder safety should always be the first priority.





Buzzards Bay Geographic Response Plan

Back River System BB-28

ID	Location and Description	Response Strategy	Implementation
BB-28-01 	Back River System North side of channel – Lat. 41°43'34"N Lon. 70°37'03"W Phinney's Point – Lat. 41°43'29"N Lon. 70°36'58"W	Divert and Collect – Shoreside Set chevron inside of river entrance to divert oil to collection points.	Deploy anchors and boom with skiffs. Create chevron by extending 600 ft of 18" boom in SW direction from north side of inlet to the center of the channel. Extend 600 ft of 18" boom from Phinney's Pt in Westerly direction to create apex. Use double anchor at apex. Set up shoreside recovery units on west side of inlet at sandy beach.
BB-28-02 	Back River System North side of channel – Lat. 41°43'35"N Lon. 70°37'13"W	Exclusion Set length of exclusion boom across marsh face.	Boom can be deployed by skiff and from shore. Set 150 ft of 18" boom between locations shown in diagram.
BB-28-03 	Back River System Various locations	Passive Recovery	Place snare or absorbent boom along marsh front to minimize damage and facilitate recovery.





Buzzards Bay Geographic Response Plan

Back River System BB-28

ID	Response Resources	Staging Area Site Access	Resources Protected	Special Considerations
BB-28-01 	Deployment <i>Equipment</i> 1200 ft. 18" boom 5 anchor sets 2 anchor stakes 600 ft. snare or sorbent boom 1 shoreside recovery system <i>Vessels</i> 2 skiffs <i>Personnel/Shift</i> 8 total (1 vessel operator + 1 responder per vessel, 4 shoreside responders) Tending <i>Vessels</i> 2 skiffs <i>Personnel/Shift</i> 8 total (1 vessel operator + 1 responder per vessel, 4 shoreside responders)	Staging Area: Bourne Rotary near State Police Barracks; Rt 28. Site Access: Trowbridge Rd to Shore Rd to Evergreen Hill Rd to Phinneys Point Rd to private beach. Chart 13236-1	Fish-shellfish, finfish Birds-waterfowl concentration Reptile-Diamondback Terrapins (state threatened) and Spotted Turtle (state special concern) Habitat – extensive marsh system, marsh grasses, eel grass beds, sand and cobble beaches (state area of critical environmental concern) Human use- recreational beaches, private docks	Vessel master should have local knowledge. Maximum estimated current. 1.0 kts. Site surveyed: 01/17/08. Tested: not yet.
BB-28-02 	Deployment <i>Equipment</i> 150 ft. 18" boom 1 anchor sets 2 anchor stakes <i>Vessels</i> 1 skiff <i>Personnel/Shift</i> 4 total (1 vessel operator + 1 responder per vessel, 2 shoreside responders)	Same as BB-28-01.	Habitat-marsh system	Same as BB-28-01.
BB-28-03 	To be determined at time of incident.	Same as BB-28-01.	Same as BB-28-01.	Same as BB-28-01.





Site Photographs and Contact Information



View of river entrance looking northeast at low tide on 29 May 2004. (RPI photo)



Rocky Point at low tide on 17 January 2008. View looks southwest.



Back River shoreline at low tide on 17 January 2008. View looks northeast.

Contact Information:

Bourne Fire Department: (508) 759-4412

Bourne DNR: (508) 759-0600

Massachusetts Dept. of Fish and Wildlife: (508) 792-7270

The Coalition for Buzzards Bay:
(508) 999-6363

Mutual Aid is available from other communities within the Buzzard's Bay GRP region that have state response trailers. More information can be found on the following MassDEP web site: <http://www.mass.gov/eea/agencies/massdep/cleanup/marine/#5>

Additional information regarding State Response Trailers, including locations and inventories can be found here: <http://www.mass.gov/eea/agencies/massdep/cleanup/marine/oil-spill-training-and-equipment-resources.html>

