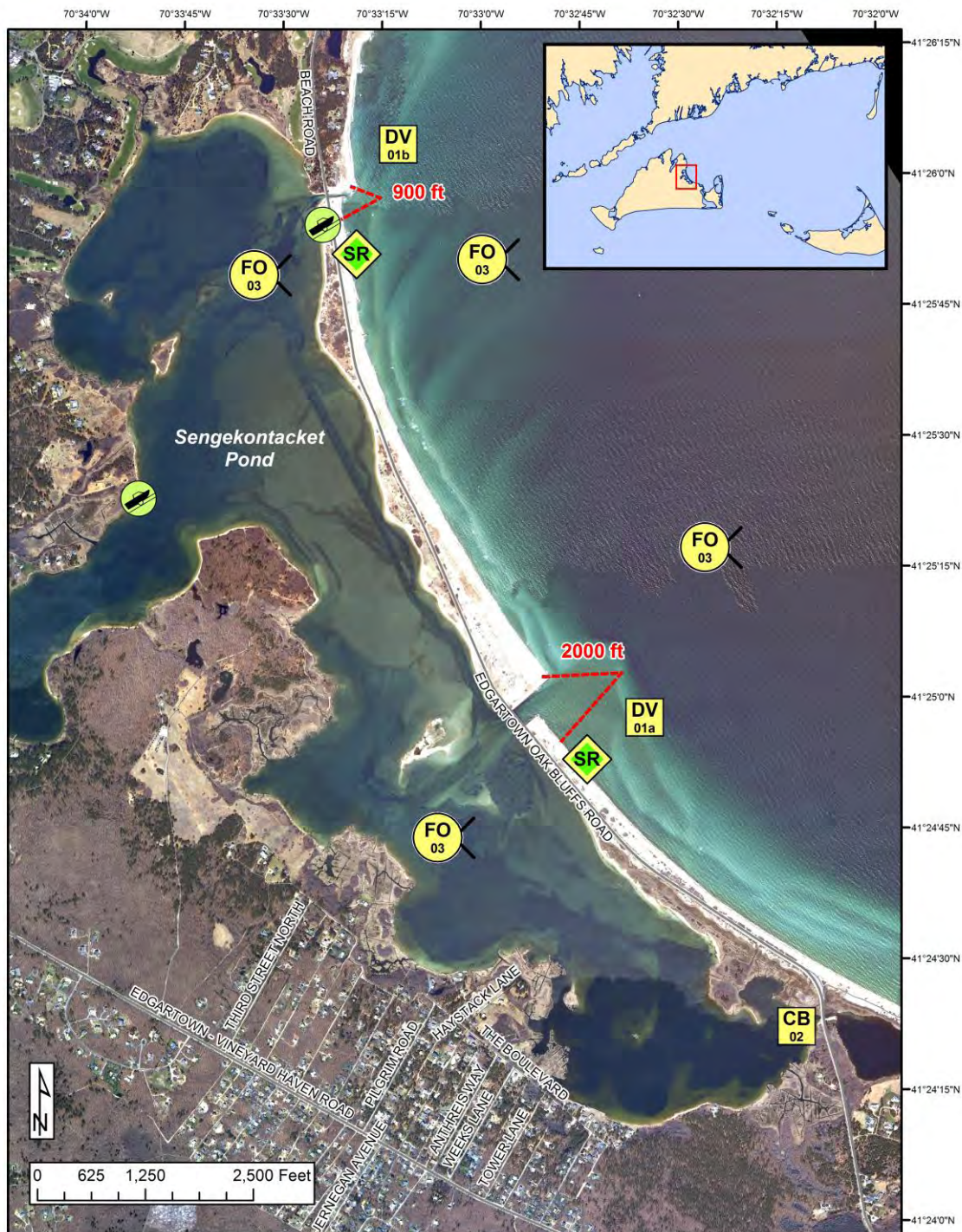




Cape and Islands Geographic Response Plan

Sengekontacket Pond CI-20



BB Beach Berm	DF Deflection Booming	MD Mosquito Ditch	Map Legend
CB Culvert Block	EX Exclusion Booming	U.S. Coast Guard Station	
DV Diversion Booming	Shoreside Recovery	Boat Ramp	
PR Passive Recovery	Free-oil Recovery	Snare or Sorbent Boom	
		Protected-water Boom (Flood Tide)	
		Protected-water Boom (Ebb Tide)	
		Beach Berm Material	




A total of 3 State Response Trailers are required to implement all of the tactics in this GRP. Responders should always consider on-scene conditions before deploying GRP tactics. Tactics may not be safe or effective under certain conditions. Responder safety should always be the first priority.





Cape and Islands Geographic Response Plan

Sengekontacket Pond CI-20




ID	Location and Description	Response Strategy	Implementation
CI-20-01 	Sengekontacket Pond Big Bridge a. Lat. 41°25'06.6"N Lon. 70°32'55.5"W Little Bridge b. Lat. 41°26'04.0"N Lon. 70°33'22.1"W	Divert and Collect-Shoreside Use 16 to 18" boom in the identified patterns and places to divert oil to a shoreside collection locations.	Deploy anchors and boom with skiffs. For (a) place 2000 ft. of 16 to 18" boom in a chevron pattern and at the proper angle to divert incoming oil to the collection site. At the collection site a hook in the boom may provide protection against oil impacting the beach. For (b) place 900 ft. of 16 to 18" boom in a chevron pattern and at the proper angle to divert incoming oil to the collection site. At the collection site a hook in the boom may provide protection against oil impacting the beach Set up shoreside recovery and tend throughout the tide.
CI-20-02 	Trapps Pond Lat. 41°24'23.4"N Lon. 70°32'09.6"W	Culvert Blocking Exclude the flow of oil through the culvert leading into Trapps Pond.	At low tide place an inflatable culvert plug in the culvert. Note that although it is preferable to block the culvert on the ebb tide, it is most important to implement as early as possible. If the inflatable plug is not available, place plywood or similar sheeting material across the entrance of the culvert. Use plastic sheeting to ensure the seal. Stack adequate sandbags against the plywood sheeting to counter the out flow pressure from the intertidal area. Monitor the block to ensure blocking integrity.
CI-20-03 	Sengekontacket Pond Nearshore waters in the general area of: Lat. 41°25'23.5"N Lon. 70°32'11.3"W	Free-oil Recovery Maximize free-oil recovery in the offshore & nearshore environment of Sengekontacket Pond depending on spill location and trajectory.	Deploy free-oil recovery strike teams upwind and up current of the Sengekontacket Pond. Use aerial surveillance to locate incoming slicks. Ensure that responders have experience with on-water free-oil recovery.





Cape and Islands Geographic Response Plan

Sengekontacket Pond CI-20

ID	Response Resources	Staging Area Site Access	Resources Protected	Special Considerations
CI-20-01 	Deployment Equipment 2900 ft. 16 to 18" boom 14 anchor systems 4 anchor stakes 2 shoreside recovery units Vessels 1 skiff Personnel/Shift 6 total (1 vessel operator + 1 responders per vessel, 2 shoreside responder per collection site) Tending Vessels 1 skiff Personnel/Shift 4 total (1 vessel operator + 1 responders per vessel, 1 shoreside responders per collection site)	Vineyard Haven Harbor has parking, a dock and boat launch. Via marine waters for deploying and tending boom. Chart 13238-1	Fish-shellfish, finfish Birds-waterfowl concentration Marine mammals-seals Habitat- marsh, sheltered tidal-flats Human Use- Commercial boat harbor, aquaculture, high-use recreational area Threatened/Endangered species: Piping Plovers (April 1 – Aug 31)	Vessel master should have local knowledge. Use caution in sandy dunes during months when plovers are present. Nesting areas may include beaches, sand spits, foredunes, and washover areas in dunes. Consult with USFWS as early as possible regarding shoreline collection areas and access plans. Entire site surveyed: 11/01/07. Tested: not yet
CI-20-02 	Deployment Transport 1 Truck Equipment 1 Inflatable Culvert Blocker OR 1 sheet of plywood 50-100 sandbags 1 Polyethylene Sheeting Vessels/Personnel/Shift Same as CI-20-01 Tending Vessels/Personnel/Shift Same as CI-20-01	Same as CI-20-01	Same as CI-20-01	Use a full block if the water will not threaten the culvert integrity and can be maintained with tidal flow. If the area requires continued draining use an underflow dam or adjustable weir to exclude incoming oil.
CI-20-03 	Deploy multiple free-oil recovery strike teams as required to maximize interception of oil before it impacts sensitive areas.	Same as CI-20-01	Same as CI-20-01	Vessel master should have local knowledge. Use extreme caution, shoal waters with rocks & continually shifting sand bars. Currents and winds are locally variable and can create dangerous operating environments.





Cape and Islands Geographic Response Plan

Sengekontacket Pond CI-20

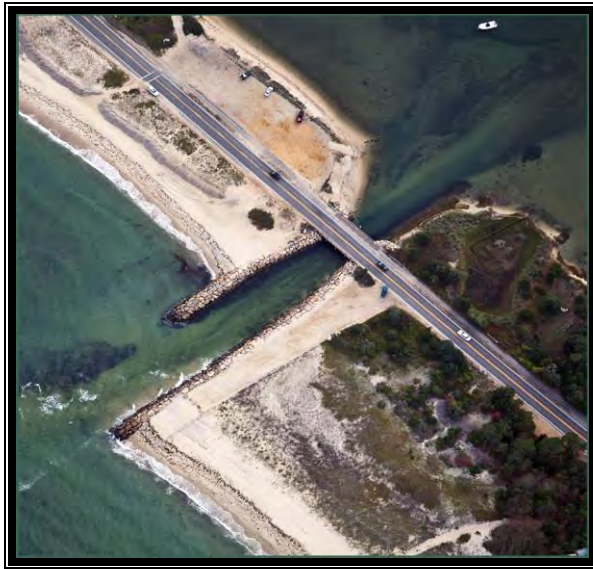
Site Photographs and Contact Information



Little Bridge at Sengekontacket Pond looking northwest.



Sengekontacket Pond looking northeast.



Little Bridge at Sengekontacket Pond looking southwest.



Big Bridge at Sengekontacket Pond looking northeast.



Big Bridge at Sengekontacket Pond looking southwest.



Sengekontacket Pond looking north.

Contact Information:

Martha's Vineyard Comm. Ctr. 24-hr: (508) 693-1212
Martha's Vineyard Commission: (508) 693-3453
Oak Bluffs-Fire Chief: (508) 693-0077
Oak Bluffs-Shellfish Dept: (508) 693-0072
Oaks Bluffs Harbormaster/Marina Manager: (508) 693-4355
Nantucket Soundkeeper: (508) 775-9767
Edgartown - Shellfish Warden: (508) 627-9819
Edgartown-Fire Chief: (508) 627-5167 or 911
Edgartown-Harbormaster: (508) 627 4746
Edgartown-Shellfish Dept: (508) 627 6175
USFWS: (413) 539-3194

Mutual Aid is available from other communities within the Buzzard's Bay GRP region that have state response trailers. More information can be found on the following MassDEP web site: <http://www.mass.gov/eea/agencies/massdep/cleanup/marine/#5>

Additional information regarding State Response Trailers, including locations and inventories can be found here: <http://www.mass.gov/eea/agencies/massdep/cleanup/marine/oil-spill-training-and-equipment-resources.html>

